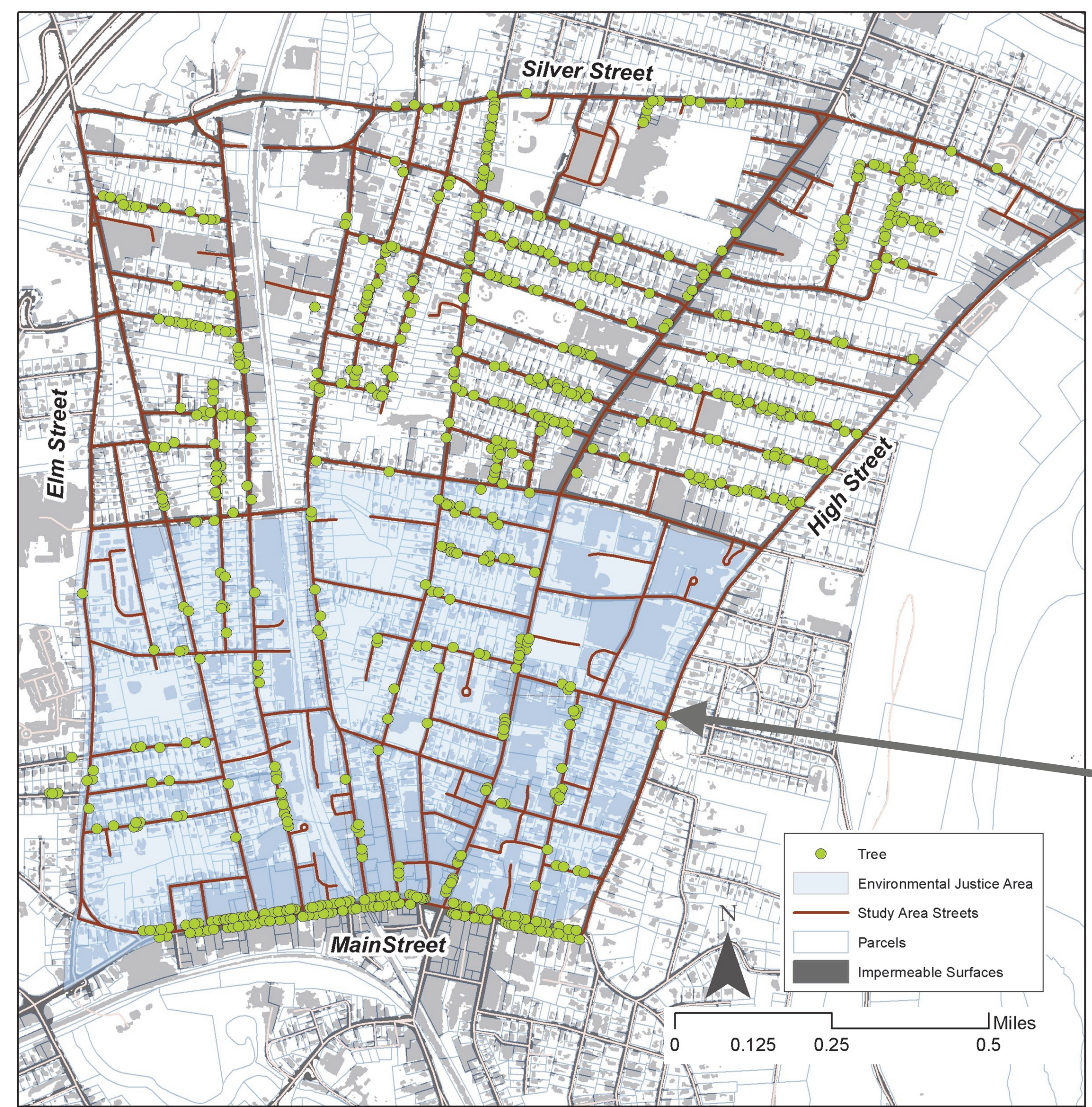
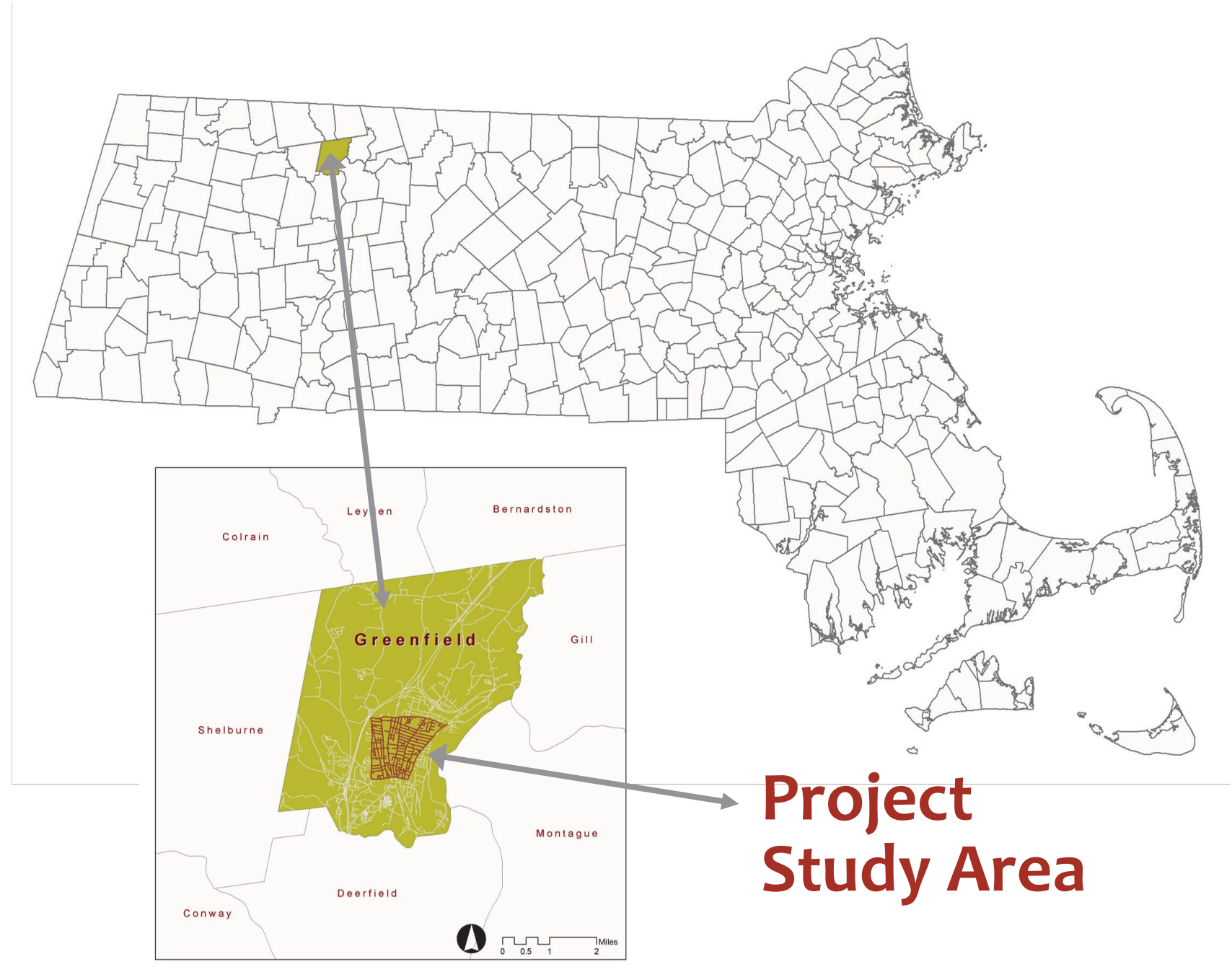


2014 Greenfield Public Tree Inventory



Total trees inventoried: 752

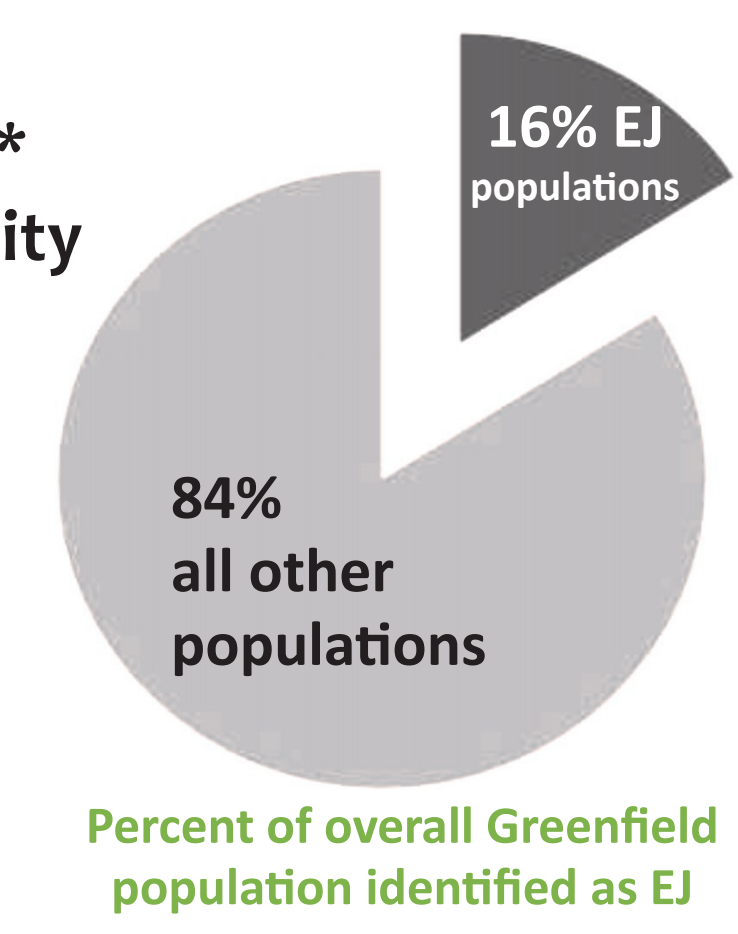
Trees were geo-located, identified by genus, species, common name, DBH, height, condition and other properties.



environmental justice (ej)

FINDINGS:
Concentration of EJ populations* occur in areas w lower tree density

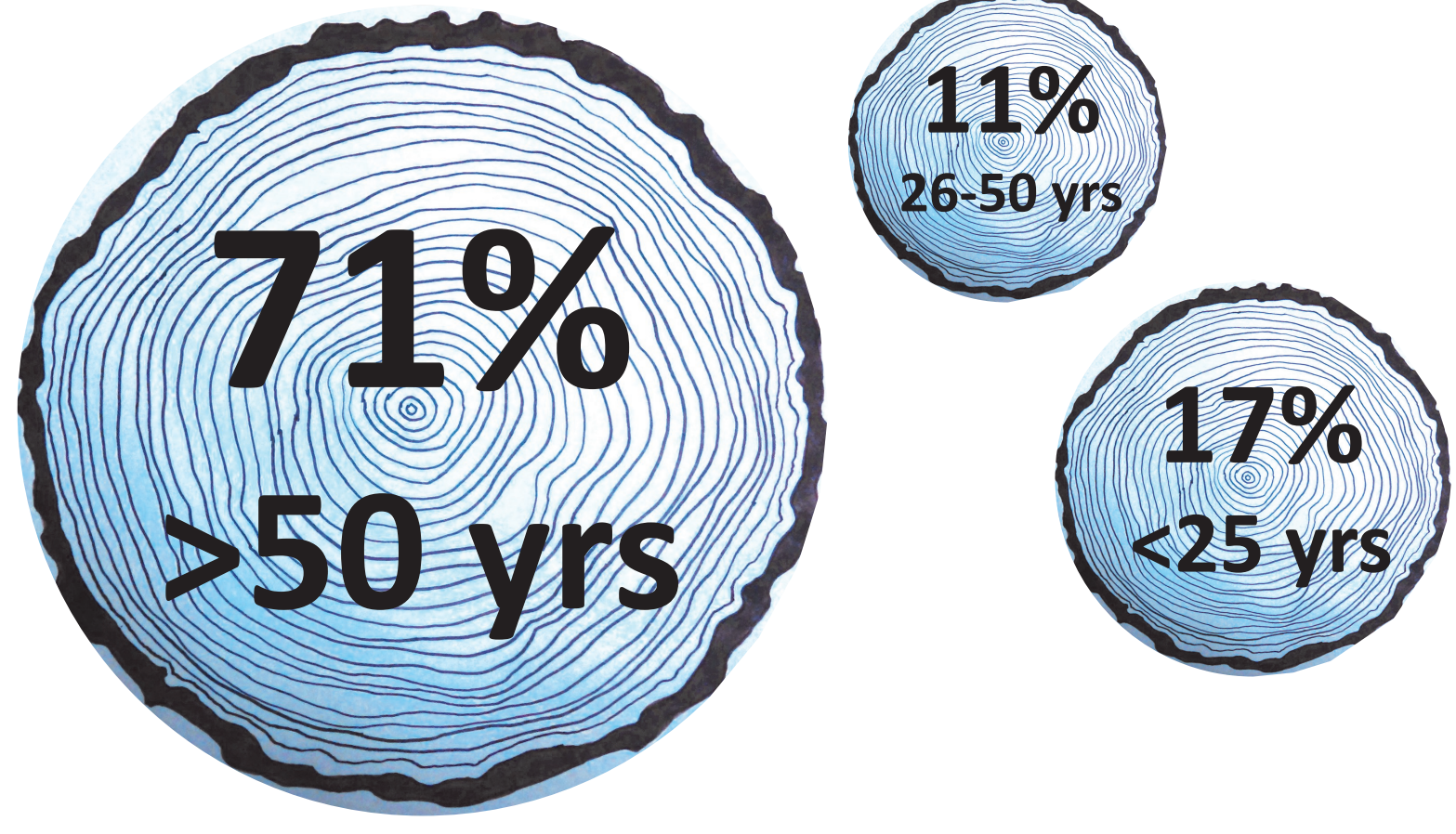
IMPLICATIONS:
Lower property values, higher summer cooling costs, and less natural beauty



*Based on low-income data. MA Executive Office of Energy and Environmental Affairs 2010

Percent of overall Greenfield population identified as EJ

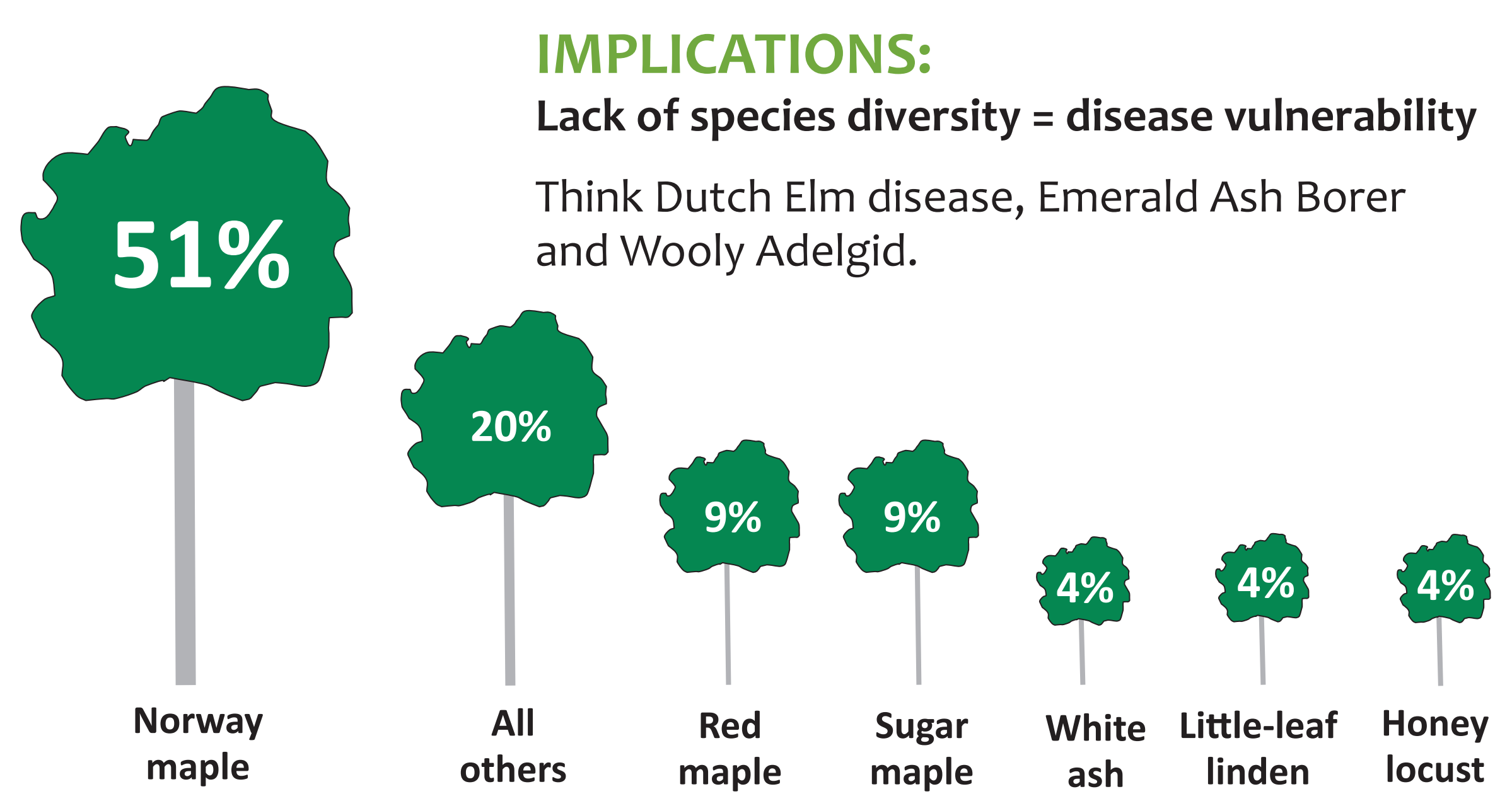
tree age



IMPLICATIONS:
Lack of age diversity = higher mass die-off potential

Trees could die out in large numbers as they reach the end of their lives and/or succumb to stressors

tree species



IMPLICATIONS:
Lack of species diversity = disease vulnerability

Think Dutch Elm disease, Emerald Ash Borer and Woolly Adelgid.

tree benefits

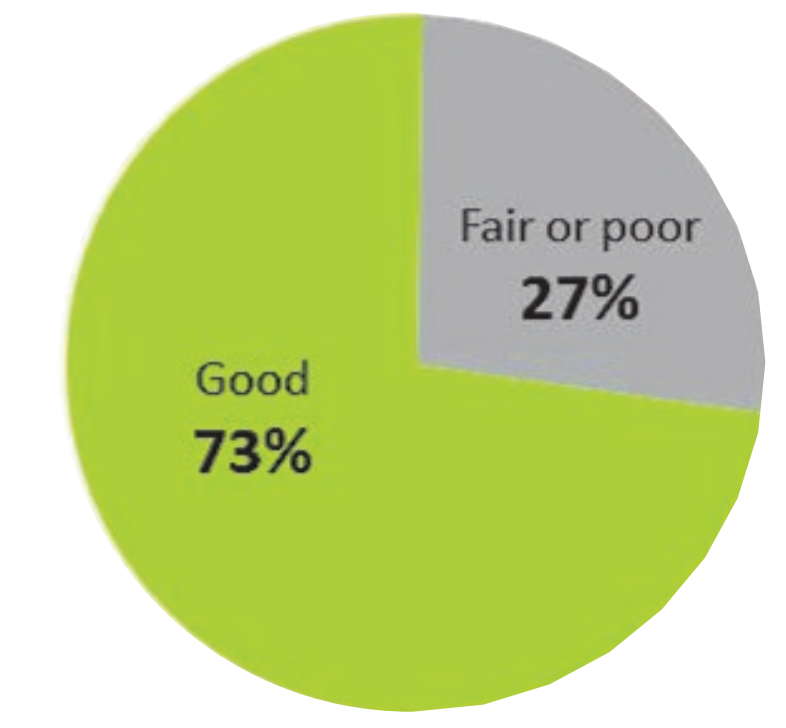


**Data provided by the National Tree Benefit Calculator, conceived and developed by Casey Trees and Davey Tree Expert Co. www.treebenefits.com/calculator. Calculated in 2016.

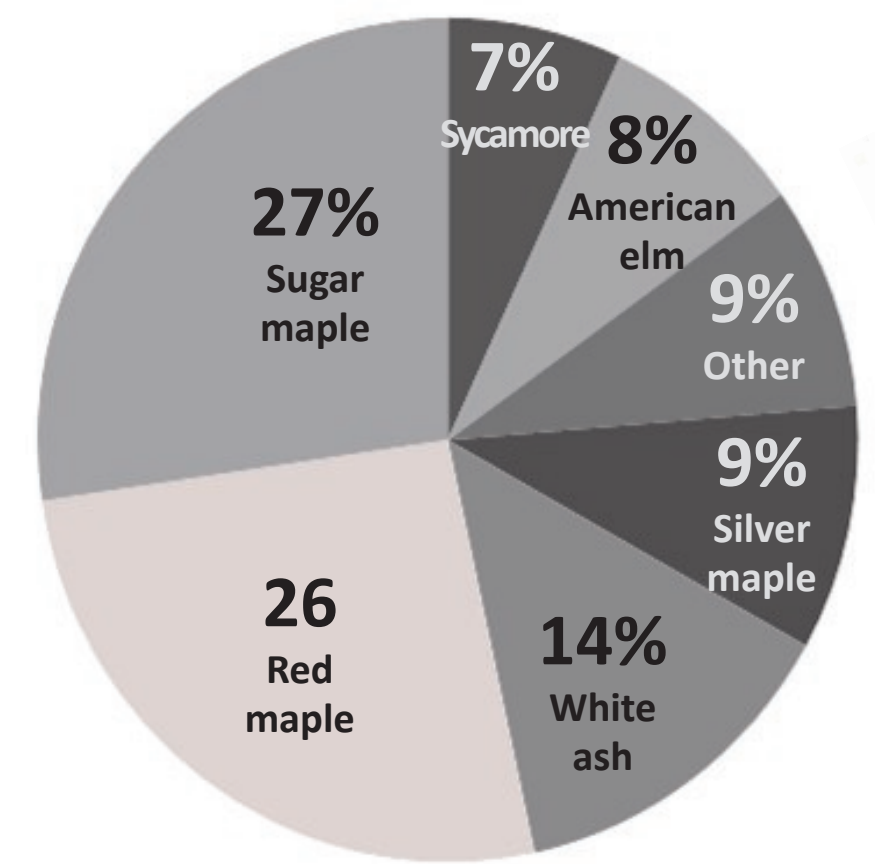
Tree condition

IMPLICATIONS:
Fair or poor = near future tree losses

Trees could die out or be removed more rapidly as their condition deteriorates



native trees



Only one-third of trees inventoried are native species

measuring

DBH = Diameter at breast height

Age* = DBH × growth factor
estimate of tree age was determined using a formula published by Missouri Department of Conservation and growth factors by the International Society of Arboriculture.***

Height = Estimated to the Nearest 5' increment

***<http://mdc.mo.gov/your-property/your-trees-and-woods/backyard-tree-care/how-old-tree>



A Sustainable Franklin County
Green Infrastructure Implementation Project
funded by a HUD Sustainable Communities Grant